

ASH DEWATERING & HYDRO-BIN LEVEL MEASUREMENT

Industry Proven Ash Level Measurement and Control with BinMinder 9300™

Effectively monitors and controls dewatering and hydro-bin material levels in coal-fired power applications.

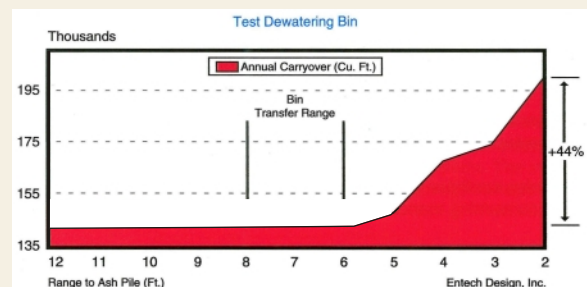
Primary Benefits

- ▶ Optimize bin filling to fully utilize capacity without costly overflow.
- ▶ Eliminate labor intensive manual soundings.
- ▶ Reduce ash pond dredging and the wear and tear from excessive recirculation of abrasive ash fines.



Features

- ▶ Cost effective single and dual-sensor systems.
- ▶ Local measurement indication and analog signal to plant control system.
- ▶ Automatic initialization and signal Gain assures continuous, uninterrupted measurement.
- ▶ Rugged sensor design assures long life and low maintenance.
- ▶ NEMA 4X instrument enclosure allows exposure to environmental elements.



Study demonstrates dramatic increase in solids carryover due to bin over-fill. Contact us or your local representative for complete details.

BinMinder 9300™

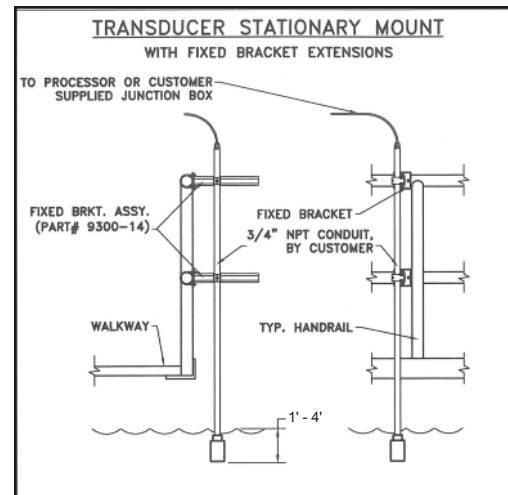
Specifications:

Ash Level

- Measurement Principle - Underwater acoustic echo-time measurement type. Single 6° full beam.
- Range - 1-100 ft.
- Accuracy - 0.1 ft.
- Display - Multi-functional digital/graphical backlit LCD with membrane switch control panel.
- Signal Outputs - 4-20mA current loop analog, 10 amp contact relays, RS232 & 485 serial interface.
- Power - Analyzer: 110/220 VAC, ± 10%

Mechanical

- Analyzer - NEMA 4x, molded fiberglass polyester enclosure
Wt: 8 lbs; Dimension: 10" x 8" x 6"
- Analyzer operates 1or 2 sensors.
- Sensor - PVC with epoxy encapsulating material
- Temperature Range -
Analyzer: -40°F to +140°F
Sensor: -40°F to +120°F
- Connections: 2 conductor, shielded



BinMinder Transducer Mounting Arrangement

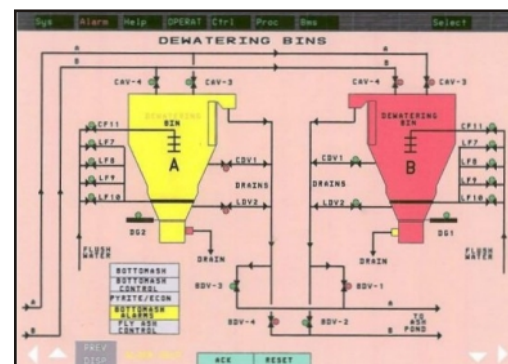
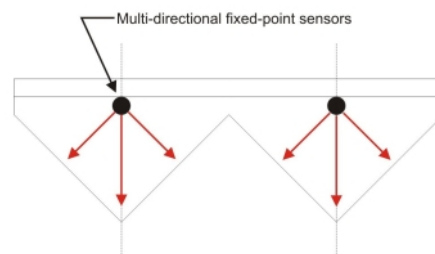


Illustration of BinMinder 9300 analog signal integrated with user supplied DCS.

Also Available - Ash Tracker™

Cost-effective continuous ash level measurement in bottom ash hoppers and slag tanks. Call for details. Request Entech Design, Inc. bulletin no. ASH1104

Installation Detail Conventional Bottom Ash Hopper



Superior Performance at Industry Leading Low Cost

Represented by:

Corporate Offices

315 South Locust
Denton, Texas 76201
Ph 940-898-1173
Fax 940-382-3242
Email: entech@entechdesign.com
Website: <http://www.blanketlevel.com>

BinMinder is a product and Trademark of Entech Design, Inc. EDI Pub. Number BM1106, Copyright© 2006 by Entech Design, Inc. All rights reserved.

Entech Design, Inc.