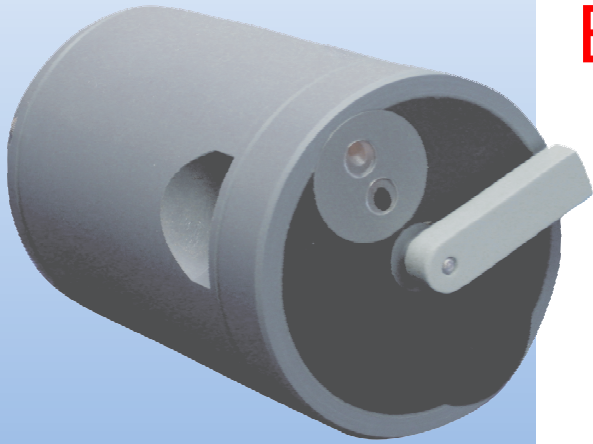


BinMinder 9300-ETS™

Sludge Level and Effluent Turbidity Analyzer



Now . . . two important control parameters in one low cost sensor!

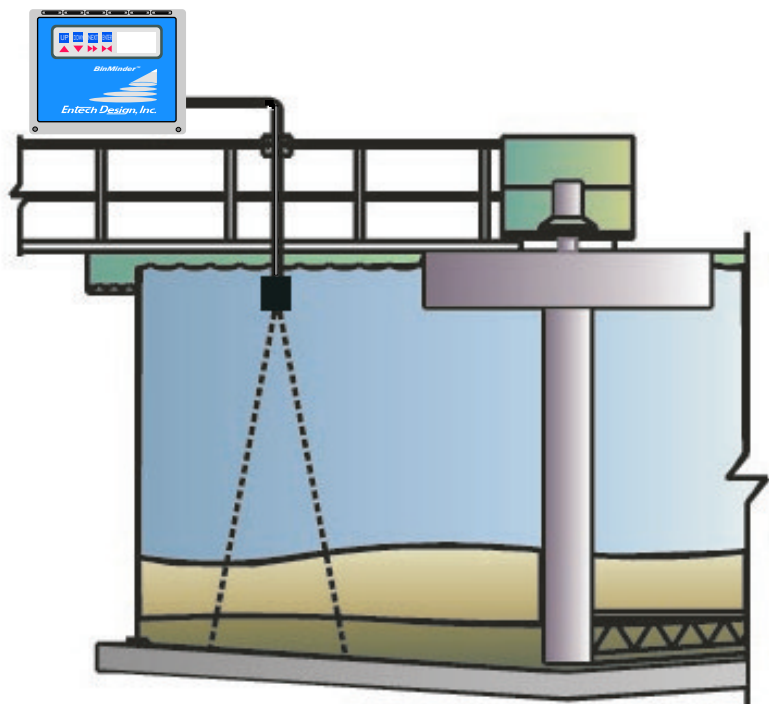
Optimize clarifier control

Respond quickly to clarifier upset

Safely automate sludge pumping

Prevent environmental discharge

BinMinder 9300-ETS™ combines proven ultrasonic sludge level and reliable scattered light turbidity technologies in a dual purpose sensor. The result is unparalleled process control in wastewater treatment clarifiers and thickeners at a remarkably low cost!



The **9300-ETS™** sensor is utilized with the standard BinMinder 9300™ Interface Level Analyzer (See EDI Pub. No. BMB0998). It contains two independent sensors - an ultrasonic sludge level sensor and an infrared 90° scattered light turbidity sensor.

The analyzer is configured with one to four dual-capability sensors for multiple clarifier process control. Local monitoring of sludge levels is via the integral LCD display - and, independent 4-20mA proportional outputs provide monitoring and control signals for sludge level and turbidity.

BinMinder 9300 with the 9300-ETS™ sensor optimizes clarifier control in a truly cost effective package.

Effective sludge level measurement for optimized clarifier control - with or without automated sludge pumping.

Effluent turbidity alerts operators to deteriorating water quality and helps prevent environmental discharge and costly regulatory penalties.

BinMinder 9300-ETS™

Specifications:

Sludge Level

Measurement Principle - Underwater acoustic echo-time measurement type. Single 6° full beam.

Range - 1-100 ft.

Accuracy - 0.1 ft.

Display - Multi-functional digital/graphical backlit LCD with membrane switch control panel.

Signal Outputs - Four 4-20mA current loop analog, Four 10 amp contact relays, RS232 & 485 serial interface.

Power - Analyzer: 110/220 VAC, 10%; Cleaning system: 12 VDC supplied by analyzer.

Turbidity

Measurement Principle - 90° Scattered light, pulsed LED, ambient compensated

Range - 0-50 NTU

Accuracy - 1% of readings @ 50NTU

Repeatability - 1% @ 50NTU

Analog Output - 4-20 mA, 600 Ohm maximum load (one per sensor)

Sensor Power - 12 VDC supplied by analyzer

Mechanical

Analyzer - NEMA 4x, molded fiberglass polyester enclosure

Wt: 8 lbs; Dimension: 10" x 8" x 6"

Analyzer operates 1-4 dual-capability sensors.

Sensor - PVC with epoxy encapsulating material, stainless steel shaft, replaceable PVC arm with rubber blade..

Sensor Cleaning - Integral Wiper System

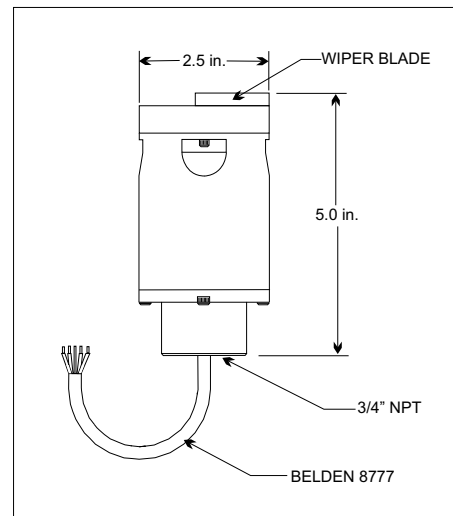
Temperature Range -

Analyzer: -40°F to +140°F

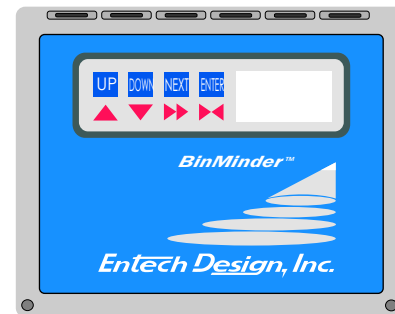
Sensor: -40°F to +120°F

Connections: 2 conductor, shielded for ultrasonic sensor and 2 conductor for turbidity sensor

9300 ETS Sensor



BinMinder 9300 Analyzer



See EDI Pub. No. BMB0998

Also Available - EPA 2000™ Media Expansion Monitor

Measures media level and loss between backwash cycles

Measures media expansion while backwashing filter

Monitors media re-compaction after backwash

Improve filter cleaning and extend filter run time

Cost effective single and multi-sensor systems

Entech Design, Inc. Brochure number EPAB0403 for complete details

Superior Performance at Industry Leading Low Cost

Represented by:

Corporate Offices

315 South Locust

Denton, Texas 76201

Ph 940-898-1173

Fax 940-382-3242

Email: entech@entechdesign.com

Website: <http://www.blanketlevel.com>

BinMinder 9300-ETS is a product and Trademark of Entech Design, Inc. EDI Pub. Number ETS0903, Copyright© 2003 by Entech Design, Inc. All rights reserved.

Entech Design, Inc.